

AL\_A

# INTRODUCING AL\_A

AL\_A is the award-winning architecture and design studio founded in 2009 by the RIBA Stirling Prize-winning architect Amanda Leveté with Directors Ho-Yin Ng, Alice Dietsch and Maximiliano Arrocet. AL\_A's approach to design balances the intuitive with the strategic, drawing on a foundation of rigorous research, innovation, collaboration and painstaking attention to detail.

The practice won the competition to design and implement the highly anticipated expansion of the Victoria & Albert Museum in London. On completion in 2017 the V&A project will see AL\_A realise a new entrance for the V&A, with the world's first porcelain courtyard above a new underground gallery housing spaces for headline exhibitions. The project will be the V&A's largest expansion in over 100 years and will be completed while the museum remains open to the public.

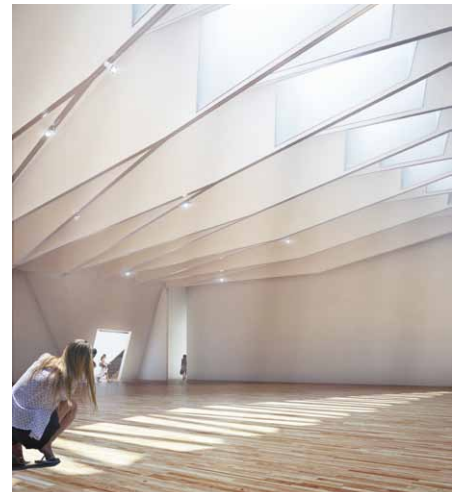
Ongoing commissions around the world include the remodelling of Galeries Lafayette Haussmann in Paris; Central Embassy, a 1.5 million sq ft mixed-use development on the former grounds of the British embassy in Bangkok; the Museum of Art, Architecture and Technology in Lisbon, commissioned by EDP, one of the world's foremost energy companies; the 2015 MPavilion, a public pavilion for the Naomi Milgrom Foundation in the Queen Victoria Gardens, Melbourne; a new centre for the cancer care charity Maggie's in Southampton; The Courtyard, a series of community mixed-use developments on 39 sites across Moscow; and the World Trade Center Mosque in Abu Dhabi.

Past clients include Sky, News Corporation, Condé Nast, Goldman Sachs, the City of Naples, Dublin Docklands, Selfridges, and the Marylebone Cricket Club.

AL\_A is engaged in long-running research into the application of new materials and techniques in architecture and design. In 2015 the practice's ceramic table, made using technologies adapted from the space industry, was selected by Edmund de Waal for inclusion in his *white* exhibition at the Royal Academy of Arts in London.

AL\_A sees self-generated projects as an essential element of its creative output. In 2014, the practice opened tincan, an acclaimed pop-up restaurant in London's Soho that served only the best tinned seafood in the world. AL\_A are developing a series of stackable football pitches that respond to London's urban context and shortage of sports facilities as well as running the Architect's Club with Robert Blair Primary School for children who are experiencing emotional and behavioural difficulties.

In every project, however modest in scale, AL\_A try to advance the debate, be it analytical response, social purpose, manufacturing technique or material innovation.



# HOW WE WORK

**Ambition shapes our work. We are at our best with clients whose ambition reaches beyond physicality, functionality and budget; those who want to move the game on, to transform themselves and create significant and positive impact beyond the building, on the community and city context.**

## WORKING THROUGH COMPLEXITY AND INTUITION DRIVES OUR STRATEGIC THINKING

Working through the complex demands of projects rigorously and rationally we interrogate complexity to add depth and intention to our work. Using our years of experience we cut through the layers and give clear strategic direction to our projects.

## COLLABORATION AMPLIFIES THE POTENTIAL OF PROJECTS

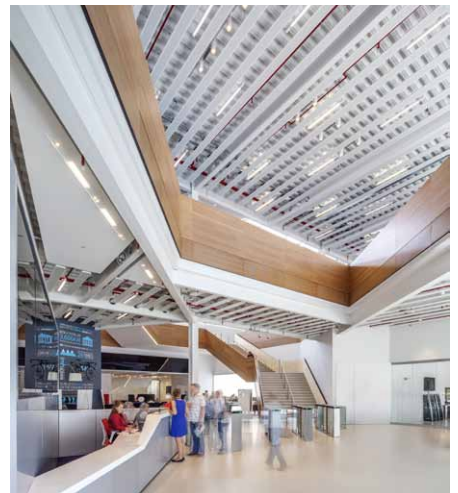
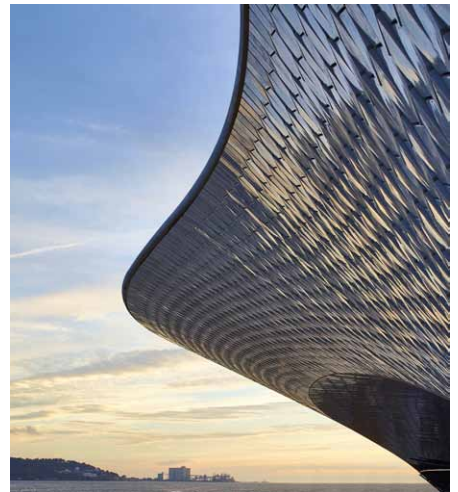
We are natural collaborators. Four directors representing three continents work on all our projects bringing a richness of possibility. This spirit of collaboration runs across the office and beyond it to the expertise and experience offered by our sophisticated network of trusted specialists.

## TECHNICAL AND CONCEPTUAL INVENTIVENESS MAKE OUR BUILDINGS SPECIAL

Technical and conceptual inventiveness sit hand in hand at the heart of our work, integral to each, operating as one. Together, inseparably they create the space, structure, form and aesthetic of our work.

## RESEARCH AND CONVICTION CREATES TRANSFORMATIONAL IMPACT

Research underpins everything we do. Research to explore the history, context, circumstance, sustainability and conceptual viability of each project, research into technical possibility and constraints, materials, structures and techniques. Carrying out research with the conviction and tenacity to see it through, maximising the potential of every aspect, is fundamental to everything we do.



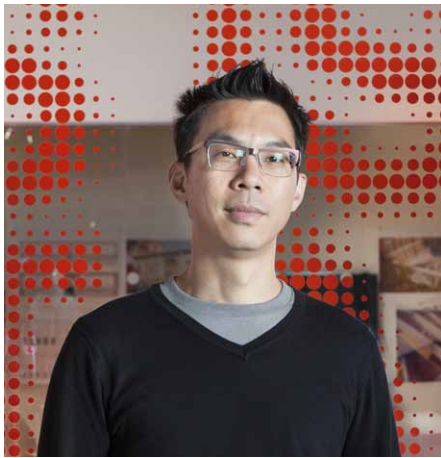
# DIRECTORS



AMANDA LEVETE

Amanda Levete is a Stirling Prize winning architect and founder and principal of AL\_A. She trained at the Architectural Association and worked for Richard Rogers before joining Future Systems as a partner in 1989, where she realised ground-breaking buildings including the Media Centre at Lord's Cricket Ground and Selfridges department store in Birmingham.

Amanda is a trustee of leading social innovation centre the Young Foundation and has served as a trustee of influential arts organisation Artangel for over a decade. She is a regular radio and TV broadcaster, writes for a number of publications, including the New Statesman and Prospect, and lectures worldwide.



HO-YIN NG

Ho-Yin Ng was made a director of AL\_A in 2009 having joined the office in 2006. He has led the teams developing the master plans and building designs for the BSKyB Media Campus.

Ho-Yin is passionate about incorporating emerging technologies that extend efficiency and enhance the design, construction and delivery process. His current research includes the integration of advanced construction techniques with sophisticated parametric 3D models that he has developed in the office. This work is driving the design methodology of AL\_A.



ALICE DIETSCH

Alice Dietsch was made a director of AL\_A in 2012 having joined the office in 2006. She has led the much anticipated V&A Exhibition Road project, since it was won through an international competition, to design the new entrance, gallery and courtyard for the Museum.

Alice also coordinates the competition group in the office and is fluent in developing innovative concepts within budgetary and technical constraints. Her working methods are driven by extensive research, experimentation and intellectual challenge. She moved to the UK after studying and working in Paris and Stockholm.



MAX ARROCET

Max Arrochet was made a director of AL\_A in 2012 having joined the office in 2007. He is leading the design of the EDP Arts & Technology Centre in Lisbon and the Maggie's Centre in Southampton. Max also leads a number of private residential projects and has an expertise in bespoke contemporary and historic detailing.

Max's brings a technical expertise from his background in engineering as well as architecture, reflected in projects at all scales, from complex building schemes to ground breaking installations.

# V&A EXHIBITION ROAD



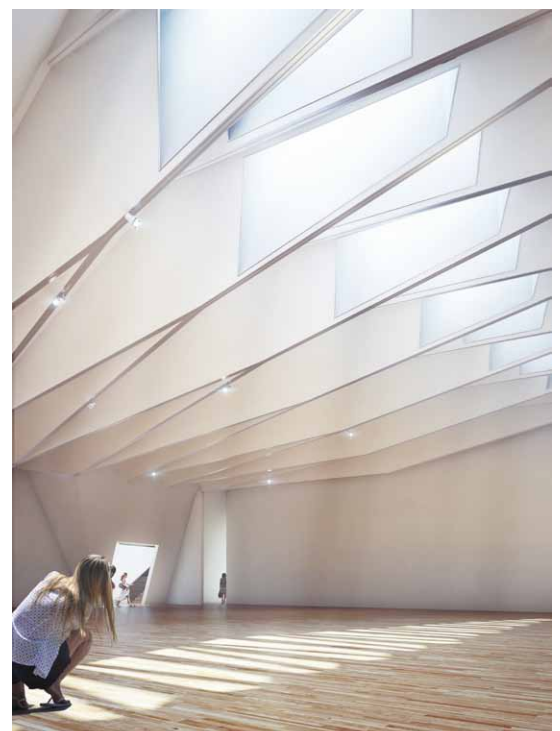
**800 tonnes of historic Grade I listed stonework stands on one “mega-beam” as excavation for the subterranean galleries progresses as part for the AL\_A’s Exhibition Road project for the V&A.**

A new lobby will be created within the Western Range to provide the entrance to the temporary exhibition galleries beneath the courtyard.

The descent to the gallery 15m below is celebrated as an important part of the visitor’s journey, woven into the fabric of the Museum and framing otherwise-impossible views of the fine façades. Descent and ascent have been designed with a specific focus on the theatre of the journey and the interplay between new and old.

The “mega-beam” is formed of four individual steel beams. It is temporarily supported on steel needles, which will be replaced by four steel columns. The beams and columns will be expressed within the volume of the stairwell, so that as visitors pass under Aston Webb’s 1901 façade they have an understanding of where they are going and where they are in relation to the rest of the Museum.

Client	Victoria & Albert Museum
Location	London, UK
Programme	Gallery for temporary exhibitions, public courtyard and new museum entrance
Area	6,360 m <sup>2</sup>
Status	In progress
Commencement	2011
Completion	2017
Architect	AL_A



# MUSEUM OF ART, ARCHITECTURE & TECHNOLOGY

---



**MAAT, the new Museum of Art, Architecture and Technology, is an outward-looking museum located on the banks of the Tagus in Belém, the district from where the Portuguese great explorers set off.**

Proposing a new relationship with the river and the wider world, the kunsthalle is a powerful yet sensitive and low-slung building that explores the convergence of contemporary art, architecture and technology.

The new building is the centrepiece of EDP Foundation's masterplan for an art campus that includes the repurposed Central Tejo power station.

Incorporating over 7,000m<sup>2</sup> of new public space and blending structure into landscape, the kunsthalle is designed to allow visitors to walk over, under and through the building that sits beneath a gently expressed arch.

Client	Fundação Energias de Portugal (EDP)
Location	Lisbon, Portugal
Programme	Museum including exhibition spaces, auditorium, cafe, public spaces
Area	6,400 m <sup>2</sup>
Status	Phase 1 completed
Commencement	2011
Completion	2017
Architect	AL_A



# CENTRAL EMBASSY



**Located within the former gardens of the British Embassy, along Ploenchit Road – Bangkok’s primary commercial artery, the 1.5 million sq ft Bangkok Central Embassy project merges a seven storey luxury retail podium and a 36 storey five-star hotel tower into a cohesive, twisting shape. The elevated form that rises from the podium wraps around two vertical light wells, opening up internal spaces to reveal stepped terraces, and dividing hotel functions; private guest-related programmes face the gardens of Lai Nert Park, while the hotel bar, reception lounge and sky terrace face the city centre.**

Client	Central Retail Corporation
Location	Bangkok, Thailand
Programme	Mixed use luxury retail, entertainment and hotel complex
Area	145,000 m <sup>2</sup>
Status	In progress
Commencement	2010
Completion	2017
Architect	AL_A

Drawing on motifs and patterns found in traditional Thai architecture, the external skin of the building is characterised by a range of extruded aluminium tiles, to create a dynamic pattern in response to external conditions. The distribution of tiles creates a moiré-like pattern, articulated by the play of light and reflects both the sky and the city. This rich pattern visually emphasizes the wrapping form of the building as well as providing scale and texture to the opaque frontage at podium level. All glazed areas are designed to merge seamlessly with the aluminium skin.

Bangkok Central Embassy blurs boundaries between diametrically opposing elements: tower & plinth, façade & roof, local craftsmanship & digital technology, Thai tradition & contemporary design. By embracing advanced technology as well as local heritage and culture, the building celebrates a perceptive and contemporary architectural language. It is a design that is local to its surrounding yet simultaneously redefines the location.

The retail element opened in May 2014, the tower completes end of 2015 and the hotel opens 2016



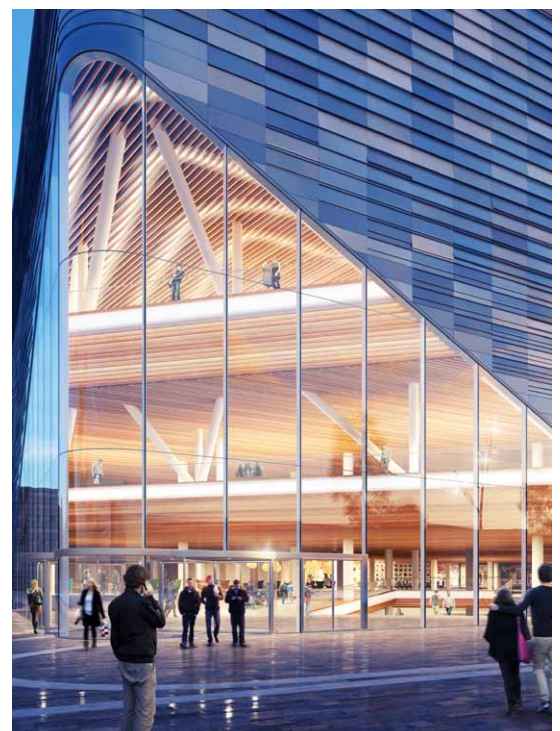
# THE COURTYARD



**The Courtyard is a network of 39 retail-led centres embedded within Moscow's peripheral communities. Acting as an urban oasis, they are the third place to live between work and home – places to gather, socialise, meet and play.**

The Courtyard is the creation of an identity that works at different scales, one that comes from memory, community and adaptability. Each has 30% community programme derived from the specific district it serves. An inspired piece of urban planning, The Courtyard sees the 39 sites that used to be Soviet-era cinemas, as a collective. Evoking the legacy and the social, political and cultural heritage of the cinemas, our thinking and design for The Courtyard creates a brand and a narrative that captures and is driven by the memory value of these sites.

Client	ADG Group
Location	Moscow, Russia
Programme	A network of 39 retail-led neighbourhood centres
Area	Centres range from 2500m <sup>2</sup> to 35,000m <sup>2</sup>
Status	In progress
Architect	AL_A



# GALERIES LAFAYETTE

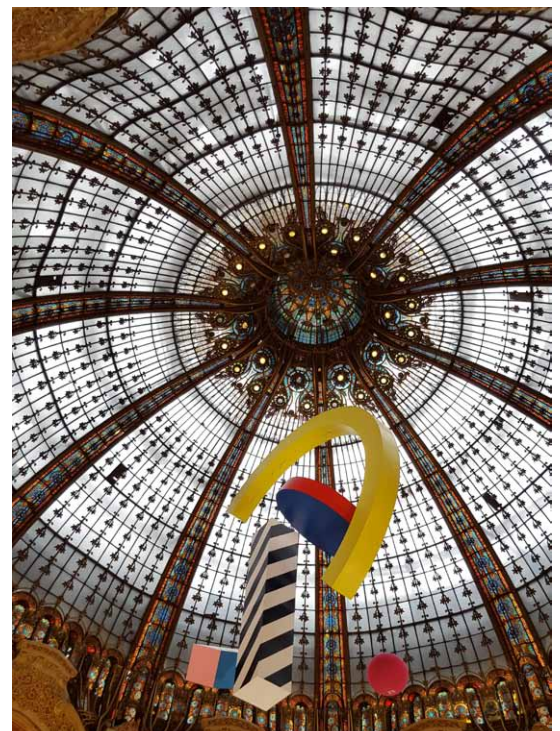
---



**“Projet Lumière” is a metamorphosis of Galeries Lafayette’s flagship store that will re-energise the building and rejuvenate the identity of the world-famous retailer. Remodelling the store over a ten year period, the metamorphosis will be realised as one hundred projects in six big moves and breathe new life into the historic building. Embracing the culture and heritage of the brand, it will nevertheless move beyond the iconic cupola to ensure that Galeries Lafayette once more becomes the most magical store in the world.**

The revitalisation will begin at the lower levels of the store to make an immediate impact on the streetscape. A new ground floor below ground in the basement and a new ground floor in the sky on Level 04 will be created, along with a dramatic new double height shop front. A new quadruple height space above the existing cupola will become a glamorous theatre for brands, fashion and creativity, while magnificent glass rooftop will signal the changes at the store, from where iconic views of Paris and her landmarks are now framed.

Client	Galeries Lafayette
Location	Paris, France
Programme	Remodelling of flagship department store
Area	44,000m <sup>2</sup>
Status	In progress
Commencement	2015
Architect	AL_A



# SKY MEDIA CAMPUS

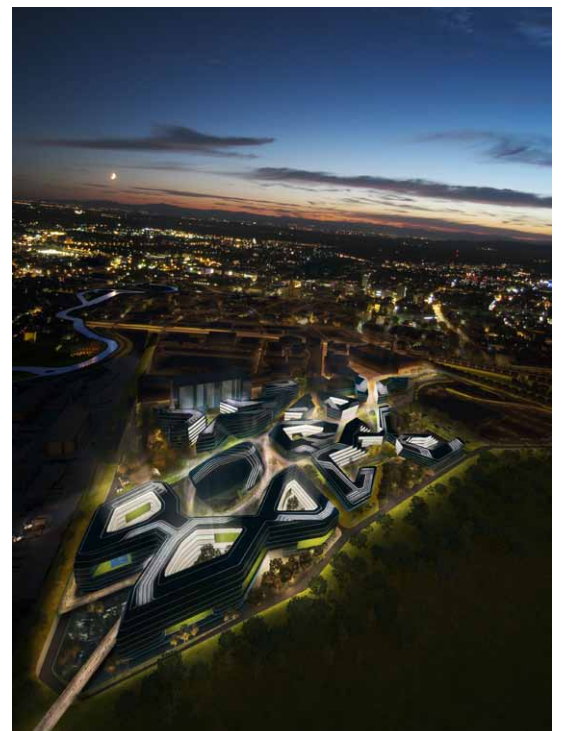


**Sky asked AL\_A to create a vision for the new Campus that reflects the workings of the organisation and is connected by the assets that drive the business forward: creativity and people.**

The layout is designed to welcome Sky's visitors and audiences, revealing the culture and spaces of the business. Food, landscape, amenities and meeting spaces all become intuitive ways of bringing people together, promoting chance encounters across the workforce and the collision of talent across every strata of the business. Extensive landscaping will surround the buildings, alongside cafes, restaurants, convenience stores, allotments and sports facilities to bring these spaces to life.

This transparency is mirrored in a building typology where all the functions of the business are gathered under a single roof, with Production and Entertainment placed at the heart of the buildings and made explicit to everyone. These open and flexible spaces are designed in clusters of neighbourhoods to accommodate a new type of creative industry, where the traditional distinctions between creative, technical, production and corporate have been broken down.

Client	BSkyB
Location	London, UK
Programme	New media campus headquarters for 12,000 employees
Area	13ha
Status	Completed (masterplan)
Commencement	2010
Completion	2012
Architect	AL_A



# SKY HUB

---



**This is the first building to be completed as part of AL\_A's masterplan for BSKYB's media campus.**

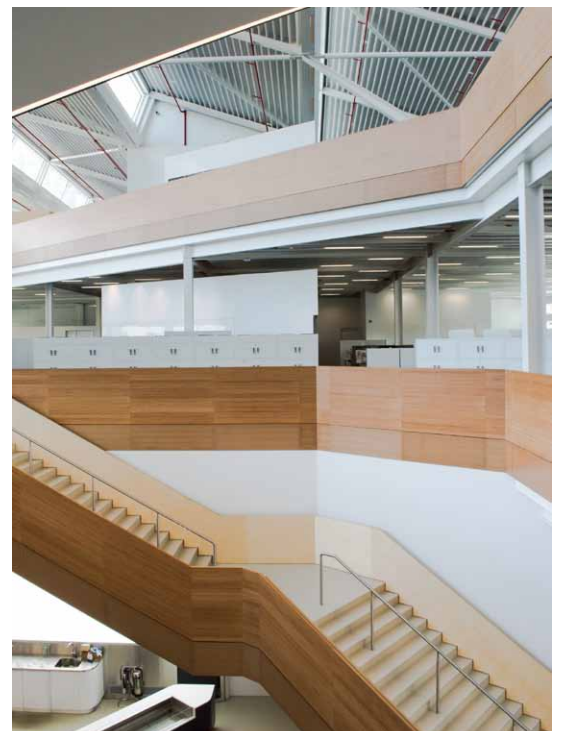
The Meeting Centre creates a spectacular working environment for 400 people in 65,000 sq. ft. with exceptional daylight from north facing roof lights.

Inspired by Sky's values of transparency and collaboration, the open and flexible spaces are designed in clusters of neighbourhoods to accommodate a new type of creative industry. Traditional distinctions between creative, technical, production and corporate have are broken down by the architectural design.

The architectural design allows and encourages the Sky vision by providing spaces that reflect the dynamism and opportunities that Sky wish to produce. This new environment promotes flexibility, openness, ease of access and communication supporting the core values that underpin the vision.

Construction was completed on time and on budget in little over a year.

Client	BSkyB
Location	London, UK
Programme	Offices, conference rooms and restaurant
Area	7,095 m <sup>2</sup>
Status	Completed
Commencement	2012
Completion	2014
Architect	AL_A



# SKY CENTRAL

---

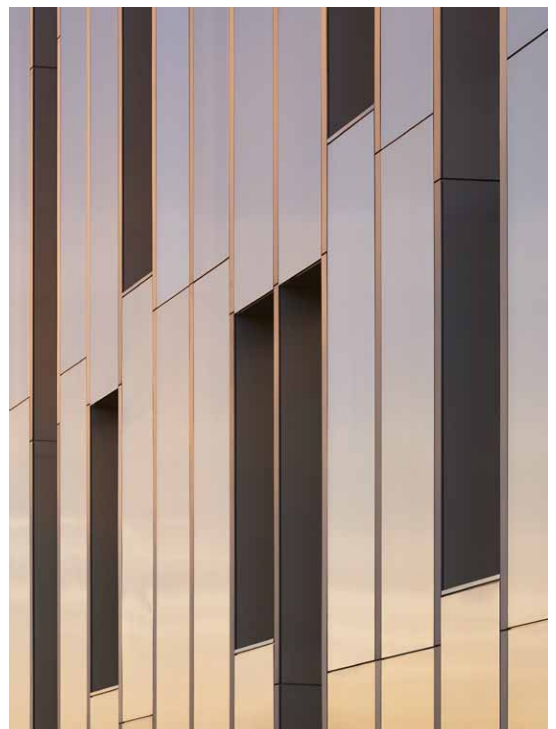


**Sky Central is a flagship building at the heart of the broadcaster's 13 hectare media campus headquarters in Osterley, West London. With over 3,500 employees housed in the building, Sky Central has been designed to promote flexibility, openness, ease of access and communication to encourage the flow of people and ideas across the business.**

The vision reflects the workings of the organisation with a campus connected by the assets that drive the Sky business forward: creativity and people. This vision was brought to life with naturally lit, overlapping voids within deep floor plates to create high levels of visual connectivity.

Open and flexible spaces are designed in clusters of neighbourhoods to accommodate a new type of creative industry, where the traditional distinctions between creative, technical, production and corporate have been broken down. These have been replaced with an interwoven, fluid workspace that can be utilised by all of Sky Central's different skills and needs.

Client	BSkyB
Location	London, UK
Programme	Offices and broadcast studios for media campus
Area	37,700m <sup>2</sup>
Completed	2016
Architect	AL_A Executive architect: PLP Architecture



# MPAVILION

---



**MPavilion 2015 is designed to create the sensation of a forest canopy, made up of seemingly fragile, translucent petals supported by impossibly slender columns that sway gently in the breeze. Under the canopy, the light is dappled and dreamy.**

The Pavilion structure responds to the climate and the landscape, exploiting the nature of the pavilion form and producing a design that speaks in response to the weather. Rooting the pavilion in its parkland setting, this forest canopy in the heart of the city gives shelter to a programme of events.

Working with specialists mouldCAM, the Pavilion uses boundary-pushing technology of composite materials to form the translucent petals that are up to 5m in diameter but only a few millimetres thick.

Client	Naomi Milgrom Foundation
Location	Melbourne, Australia
Programme	Pavilion
Area	150m <sup>2</sup>
Status	Completed
Commencement	2013
Completion	2015
Architect	AL_A
Selected awards	Shortlisted - WAN Awards



# MAGGIE'S CENTRE

---



**This is a building which emerges from an apparently abstract plan with an almost ethereal clarity. The project imagines the haven of a garden transported from the New Forest into the midst of the hospital's concrete landscape. This arboreal context and wild naturalistic topography offers seclusion and protection from the outside world.**

Subtle, light and with a rainbow of colours from the garden, this is an exquisite design to lift the weight off the shoulders of all who visit and all who work in it.

Client	Maggie's
Location	Southampton, UK
Programme	Cancer care centre
Area	360m <sup>2</sup>
Status	In progress
Commencement	2014
Completion	2017
Architect	AL_A



# HILLS PLACE

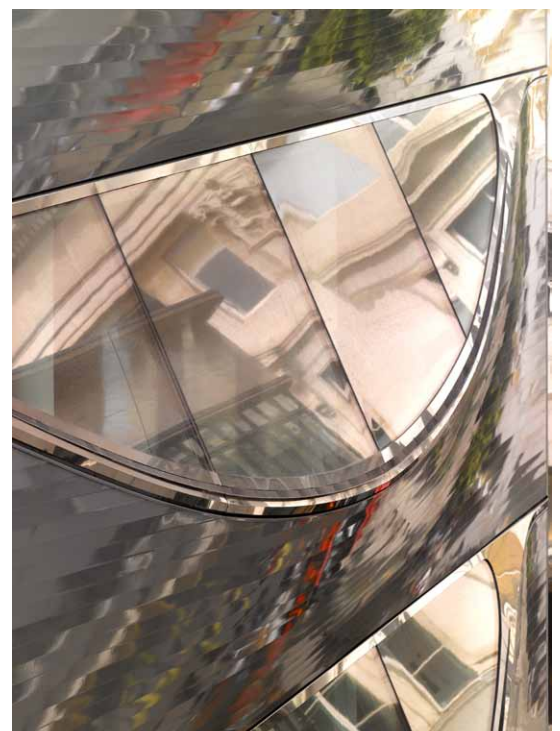


**Many narrow streets and alleyways off Oxford Street, London are currently misused and underdeveloped. These under regarded areas are ideal not only for improvement, but also for relatively unconventional design opportunities.**

Our proposal acknowledges this by providing an architectural intervention that subtly draws attention to the building through the intrigue of a sculptural façade. Inspired by the art work of Lucio Fontana large glazed areas orientated towards the sky are slashed into the façade, maximising the natural light available in this narrow street.

This sculptural form is achieved using a system of aluminium profiles used in the production of high quality, ship hulls. The facade is fabricated using curved 140mm wide aluminium profiles that are connected together on-site, using a tongue-and-groove system ensuring water-tightness and construction efficiency. The metallic silver finish is a high performance durable paint typically used on super yachts. The use of self cleaning glass and an ingenious detail of hidden gutters within the eyelids ensures the facade remains low maintenance.

Client	Clarendon Properties
Location	London, UK
Programme	Offices: addition of 3 floors above existing 2 storey brick retail building, and a new façade.
Area	1,320 m <sup>2</sup>
Status	Completed
Commencement	2004
Completion	2009
Architect	AL_A



# OXFORD STREET

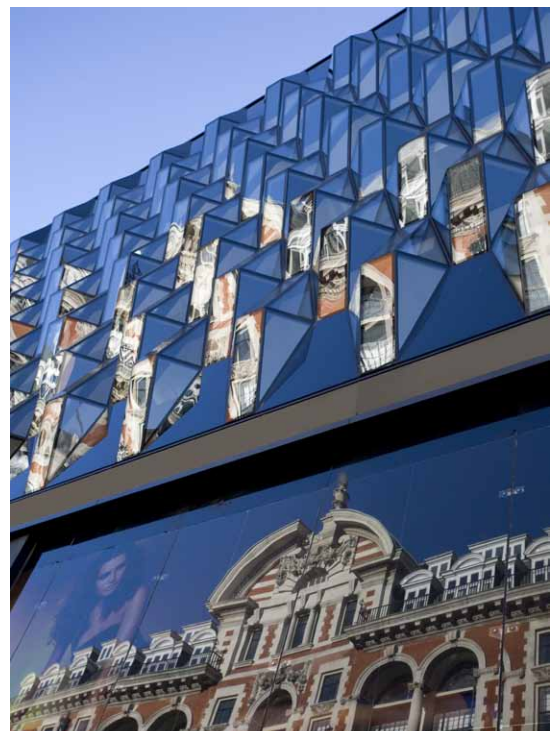
---



**The brief was to transform the quality and appearance of a tired 1960s building at the undeveloped end of Oxford Street. Our proposal removes the brick and glass façade and replaces it with a subtle yet vibrant jewel-like glass frontage that delicately unifies the lower ground and first floor retail units with the office space above.**

Through the repetition of crystal-like glass bays, a sense of scale and rhythm is created that reflects the grain of the adjacent properties as well as giving the offices panoramic views along Oxford Street. At night the façade will be illuminated from inside giving off a subtle coloured glow. The scope of this scheme includes the addition of 1 floor and 2 new façades.

Client	Private investor
Location	London, UK
Programme	Additional floor to building and store façade.
Status	Completed
Commencement	2006
Completion	2008
Architect	Future Systems



# MUMBAI CITY MUSEUM

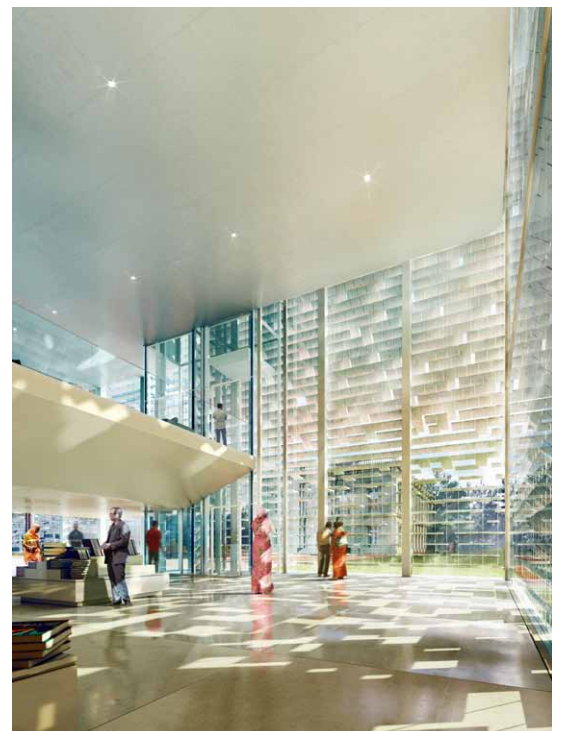


**Using the power of absence to create connections between history and the future, a sunken courtyard is embedded between the existing Museum building and the new North Wing. The courtyard is a metaphor for the cycle of the seasons, capturing the dramatic contrasts of the climate. It creates a place for contemplation and reflection and a place for community.**

Encircling the courtyard is Mumbai Modern, a gallery that forms the beating heart of the Museum, mediating between the old and the new.

The new wing is a silent art container clad in a veil of red stone that speaks of the history of Indian craftsmanship.

Client	Dr. Bhau Daji Lad Museum Trust
Location	Mumbai, India
Programme	Masterplan & new galleries for permanent and temporary exhibitions
Area	15,700 m <sup>2</sup>
Status	Invited competition — 2nd place prize
Commencement	2014
Architect	AL_A



# GLOBE ACADEMY

---



**The Globe Academy is an all-through school that replaced the Joseph Lancaster Primary School and the Geoffrey Chaucer Technology College on a site at Harper Road, off New Kent Road, Southwark. Sited within a socially deprived area, the Glove Academy demonstrates the potential not only to create new beginnings for pupils, but also to act as a motivator for learning and a catalyst for welcoming and engaging with the wider community of Southwark.**

The Academy is the embodiment of our belief that the qualities of the environment in which you learn, and in particular light, space, colour and sound, make a real difference to how quickly you learn and how much you enjoy learning. We aspired to making the learning spaces beautiful and inspirational and to create a positive experience for all those involved in the learning process.

Nurturing and educating from infant to teenager, the Academy delivered ARK's highly aspirational brief for 'schools within schools' that demanded each school has a separate identity while at the same time working within the concept of a campus.

Client	DCFS/ARK Education
Location	London, UK
Programme	'All-through' academy for 1500 students
Area	13,700 m <sup>2</sup>
Status	Completed
Commencement	2007
Completion	2012
Architect	AL_A



# LORD'S MEDIA CENTRE

---



**The objective of the design was to respect and savour the essential nature of Lord's while bringing to it a building that heralded the coming millennium and provided the most elegant and state-of-the-art media centre in the world.**

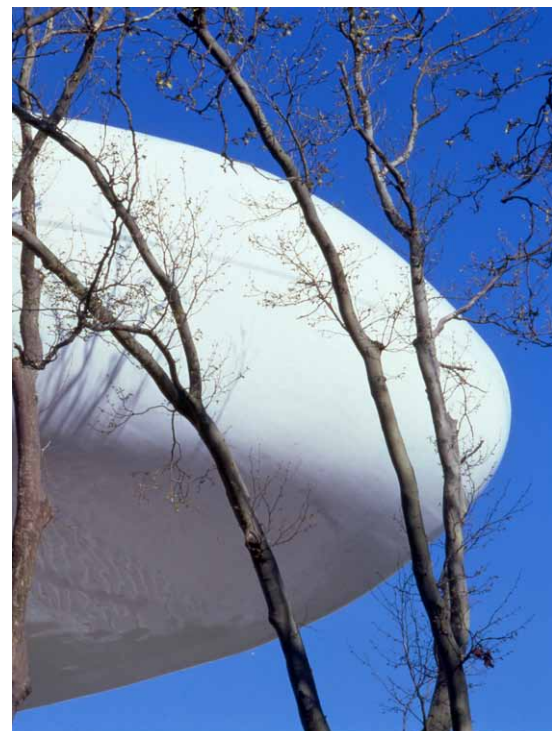
It captured the public imagination with its form and function, transforming a generic brief into an elegant solution, made possible by the marriage of conceptual with technical inventiveness.

The Media Centre at Lord's is one of the most innovative buildings of the twentieth century. The first all-aluminium, semi-monocoque building in the world, it represents a breakthrough, not just in the creation of a new three-dimensional aesthetic, but in its method of construction. This building was built and fitted out not by the construction industry but a boatyard, using the very latest advances in boat building technology.

The building is designed to house 250 of the world's media during international cricket matches. It is the place from which the media broadcast their message while images of the building itself are then seen on millions of televisions around the world.

It is both the medium and the message.

Client	Marylebone Cricket Club
Location	London, UK
Programme	Media centre at Lord's Cricket Ground
Area	600 m <sup>2</sup>
Status	Completed
Commencement	1994
Completion	1999
Architect	Future Systems
Awards (selected)	RIBA Stirling Prize World Architecture Award



# SELFRIDGES

---

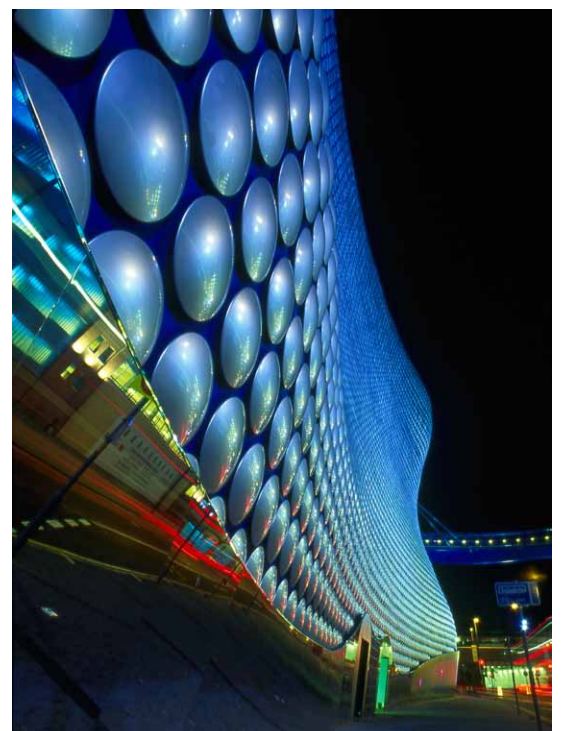


**Our ambitious brief was not only to design a state of the art department store but also to create an architectural landmark for Birmingham so that the building itself would become a genuine catalyst for urban regeneration.**

We have re-interpreted the notion of a department store, not just in its form and appearance but also in the social function such a building now plays in our society. Its relationship to the church is significant, representing the religious and commercial life of the city that have evolved side by side over hundreds of years. The building provides an ethereal backdrop to the Gothic architecture of St Martin's and its closeness creates a powerful visual tension between church and department store. Glimpsed from the train entering Birmingham from the south, it promises mystery and excitement in a city undergoing a twenty-first century renaissance.

The fluidity of shape recalls the fall of fabric or the soft lines of a body, rises from the ground and gently billows outwards before being drawn in at a kind of waistline. It then curves out again and over to form the roof, in one continuous movement. The skin is made up of thousands of aluminium discs, creating a fine, lustrous grain like the scales of a snake or the sequins of a Paco Rabanne dress. In sunlight it shimmers, reflecting minute changes in weather conditions and taking on the colours, light and shapes of people and things passing by – an animate and breathing form.

Client	Selfridges & Co
Location	Birmingham, UK
Programme	Department store
Area	25,000 m <sup>2</sup>
Status	Completed
Commencement	1997
Completion	2003
Architect	Future Systems
Awards (selected)	RIBA Award for Architecture: Midlands Civic Trust Award



# MONTE ST ANGELO SUBWAY STATIONS



**The brief from the City of Naples, to create a fully-functioning subway station that is in itself a work of art, demanded a synthesis of purpose and beauty that was fundamental to our creative process.**

At the surface the station will be the central element in the urban and cultural regeneration of the Traiano district that has suffered in its recent history from infrastructural isolation and neglect.

Simultaneously the network of tunnels and vaults designed and subsequently abandoned midway through a previous tube station project, describes an underworld barely tangible in the gleaming and sanitary underground spaces of contemporary subway projects. In the shadow of Vesuvius and embedded in layers of early civilisation, these dark and brutal concrete shells have been inspirational to our formal and material approach.

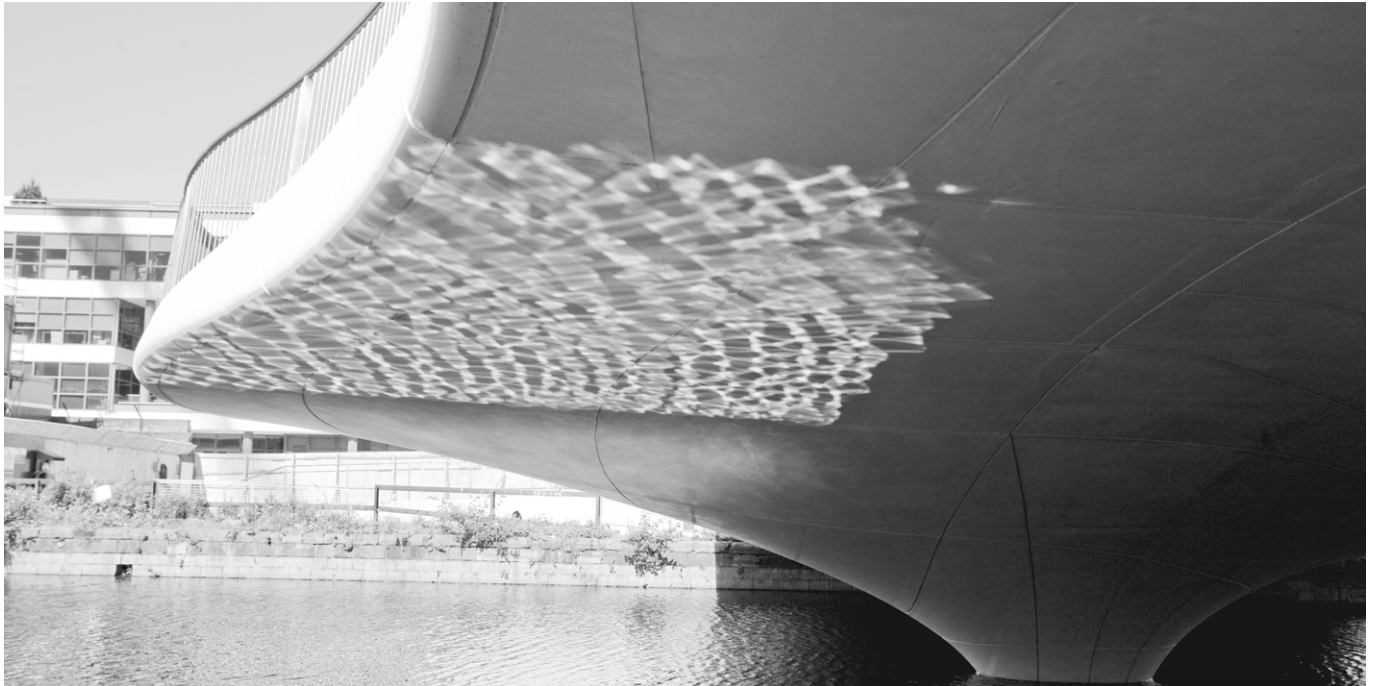
The complex brief and site demanded a synthesis of purpose and beauty. The result is an explicit expression of the eternal tension between form and function, and between art and architecture.

Client	SEPSA
Location	Naples, Italy
Programme	Subway stations entrances and platforms
Area	8,000 m <sup>2</sup>
Status	In progress (on hold)
Commencement	2003
Completion	2016
Architect	AL_A, in collaboration with Anish Kapoor



# SPENCER DOCK BRIDGE

---

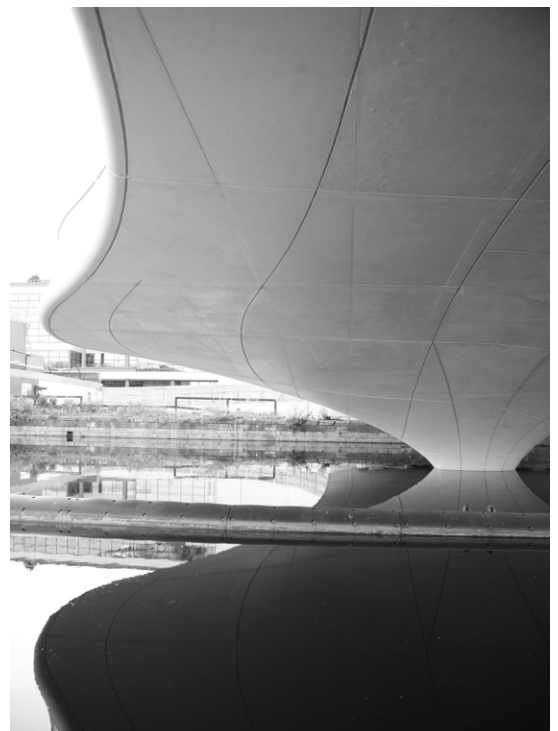


**The 40 metre span bridge with its fluid lines and undulating concrete surface takes trams, traffic and pedestrians across the Royal Canal. The edges of the deck peel down to reveal a space for pedestrians to pause and take in views of the dock and Linear Park.**

The underside of the bridge merges with the piers in a single movement with joint lines in the concrete designed to accentuate the geometry of the form. The finish of the concrete provides high visibility against the dark water of the canal and at night the structure is vibrantly lit from below, underlining its fluid form.

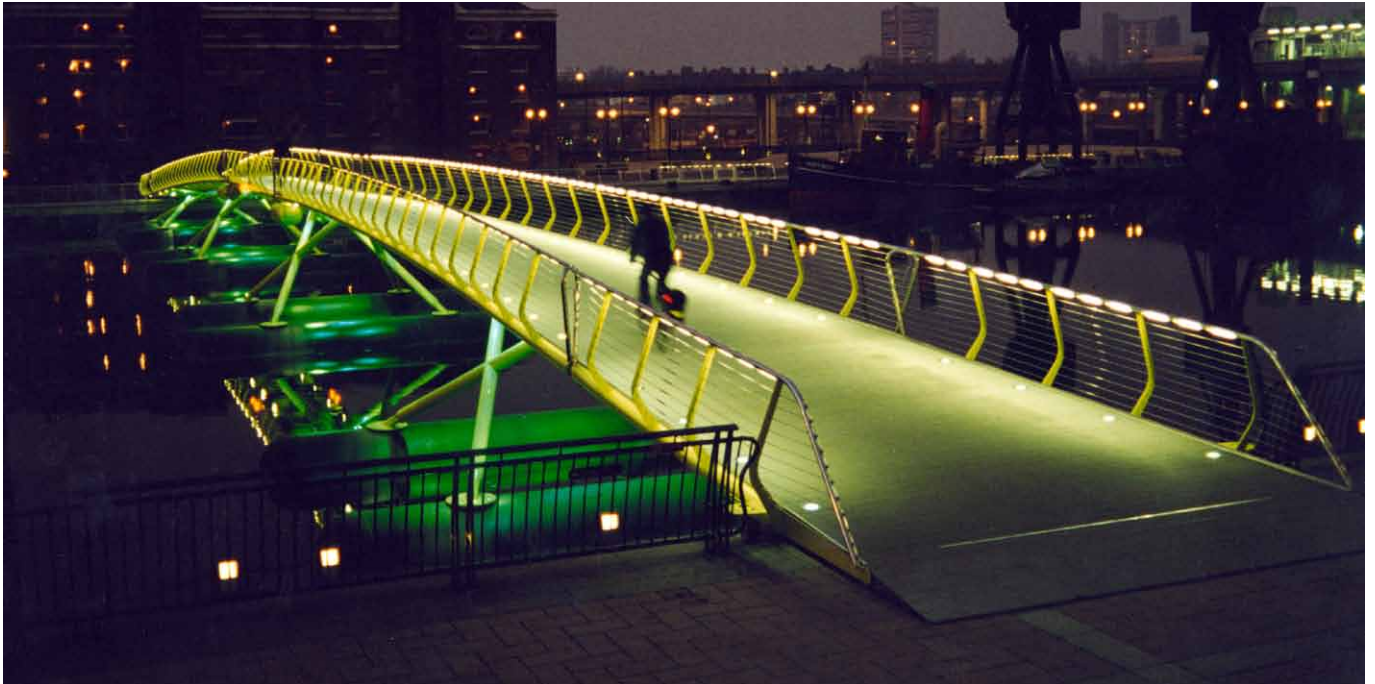
The proportions of the bridge are unusual and the design exploits these by treating the bridge as a piece of landscape design. The soft geometry and asymmetry create a piece of infrastructure that resolves the tension between form and function.

Client	Dublin Docklands Development Authority & Railway Procurement Agency
Location	Dublin, Ireland
Programme	Bridge for vehicles, trams and pedestrians
Span	40m
Status	Completed
Commencement	2006
Completion	2009
Architect	AL_A



# FLOATING BRIDGE

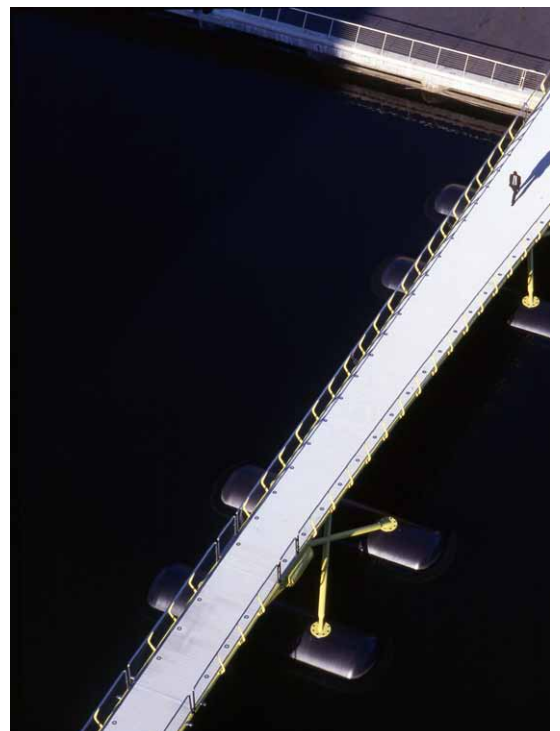
---



**The bridge links two areas of very different scale. On the one side a vast commercial development and on the other the more delicate proportions of 19th century warehouses and a quayside piazza. By creating a low floating structure emphasis is placed on the horizontal stretch of water rather than the vertical dominance of Canary Wharf.**

The slender form of the bridge is evocative of a brightly coloured insect touching the water as lightly as a water skater, offering pedestrians a sense of freedom as they cross. Colour is central to the concept – like a laser beam of light the bridge skims the dock with a piercing lime green line, the sense of perspective exaggerated by the tapering plan of the deck.

Client	London Docklands Development Corporation
Location	London, UK
Programme	Footbridge across a basin in Canary Wharf, London's business district
Span	94m
Status	Completed
Commencement	1994
Completion	1996
Architect	Future Systems



# METROPOLIS

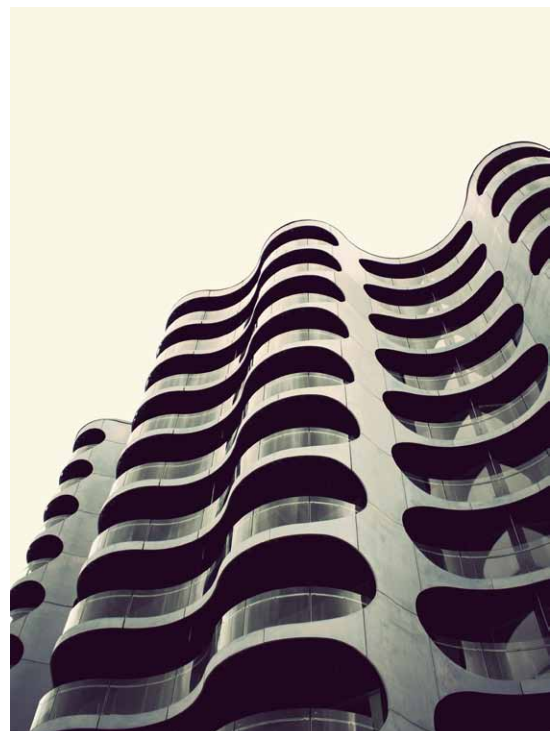
---



**44 luxury apartments sited on a peninsula in the Port of Copenhagen. In order to create a slender profile to this 11 storey high building, the plan of the apartments is conceived as 3 towers linked in a petal formation. The structure is a single pre-cast concrete frame with blue pigmented render as a facing material.**

Future Systems worked closely with the developer client and the contractor as a design consultant during outline and detailed design stages. All the apartments were sold prior to construction commencing.

Client	Nordkranen
Location	Copenhagen, Denmark
Programme	Luxury residential
Area	14,000 m <sup>2</sup>
Status	Completed
Commencement	2004
Completion	2008
Architect	Future Systems
Awards (selected)	City of Copenhagen Good & Beautiful Buildings Award



# TINCAN



**Tincan is a pop-up restaurant project in Soho, serving the best tinned seafood in the world.**

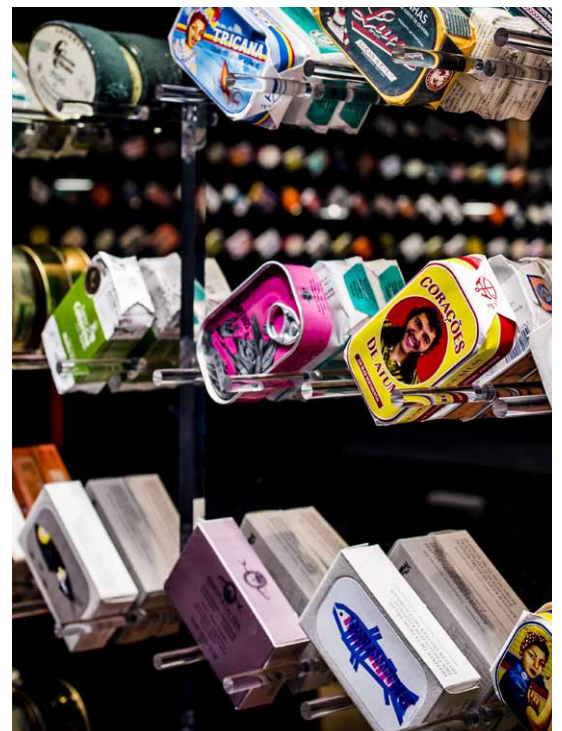
While designing a new cultural centre in Lisbon, the AL\_A team discovered a former fishing tackle shop, which was transformed into a tiny, vibrant restaurant serving only tinned seafood. What started as lunch quickly became an idea, and subsequently a new project.

Tincan elevates the tin to an object of desire in an environment designed by AL\_A, which offers 30 different tins, all of the highest quality seafood, to eat in the restaurant or to buy in the shop.

Working with their collaborators, AL\_A have designed lights to showcase LG's OLED technology, a wafer thin light source, stackable aluminium stools and tables made by Iduna of Portugal, and walls in black Corian® as a backdrop to display the iconography of the packaging.

The idea is very compelling: no kitchen, the finest tinned seafood delicacies, super healthy, and great graphics with the tin as the hero.

Client	AL_A
Location	London, UK
Programme	Pop-up restaurant
Area	40 m <sup>2</sup>
Status	Completed
Commencement	2014
Completion	2014
Architect	AL_A



# THONG LO

---



**Thong Lo sets a new benchmark for eating and drinking destinations in Bangkok. This project seeks to redefine the typology of community malls creating a distinct identity for the district that connects with the community.**

A large cut is carved out of the mall to make space for a park that gives a serene character to the development. This quiet pocket of green is connected to the busy street scene encircled by 12 restaurants and an exclusive nightclub at the back of the site.

Client	RS Public Company Limited
Location	Bangkok, Thailand
Programme	Retail destination with restaurants and night club
Area	4,730 m <sup>2</sup>
Status	Under construction
Commencement	2014
Completion	2015
Architect	AL_A



# COMME DES GARÇONS



**The brief to create a new kind of space with an atmosphere of experimentation has resulted in three powerful, uncompromising environments, focussing on the threshold between arrival and entry.**

## **New York** (right)

Rather than creating an entirely new façade, which was the original brief, the existing nineteenth century fabric with all the old signage and external industrial fire escapes is retained. Grafted behind the central existing brickwork entrance arch is the link: an asymmetric entrance structure made entirely from aluminium that draws the visitor in from the noise of the New York street. The entrance becomes a transition, not entirely inside or outside, but a fissure through an existing building heading to new environment. The skin has been mechanically formed and then finished to reveal the hands of the maker.

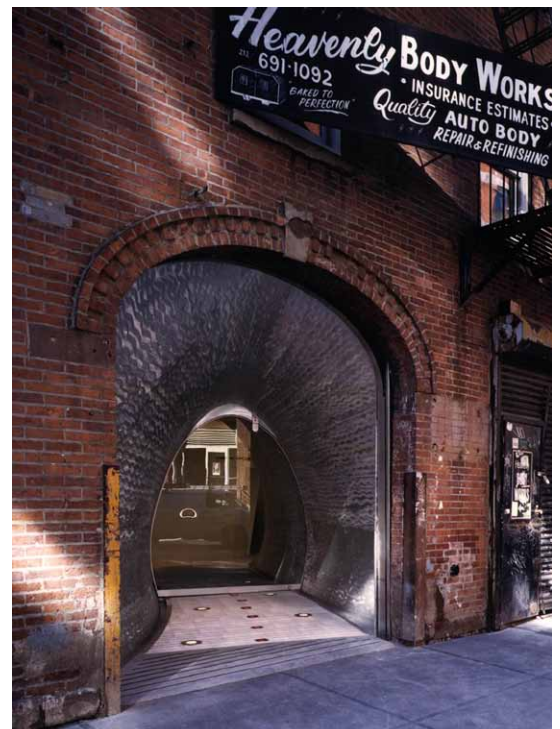
## **Tokyo** (top)

Two horizontal concrete slabs of a dumb existing building are joined with two ribbons of conical-curved, inclined glass offering a simple liquid entrance where they converge. The glass is covered with a layer of translucent blue dots which act as a filter between inside and outside. At night the movement of people within the shop creates a curiosity for the pedestrian passing the façade.

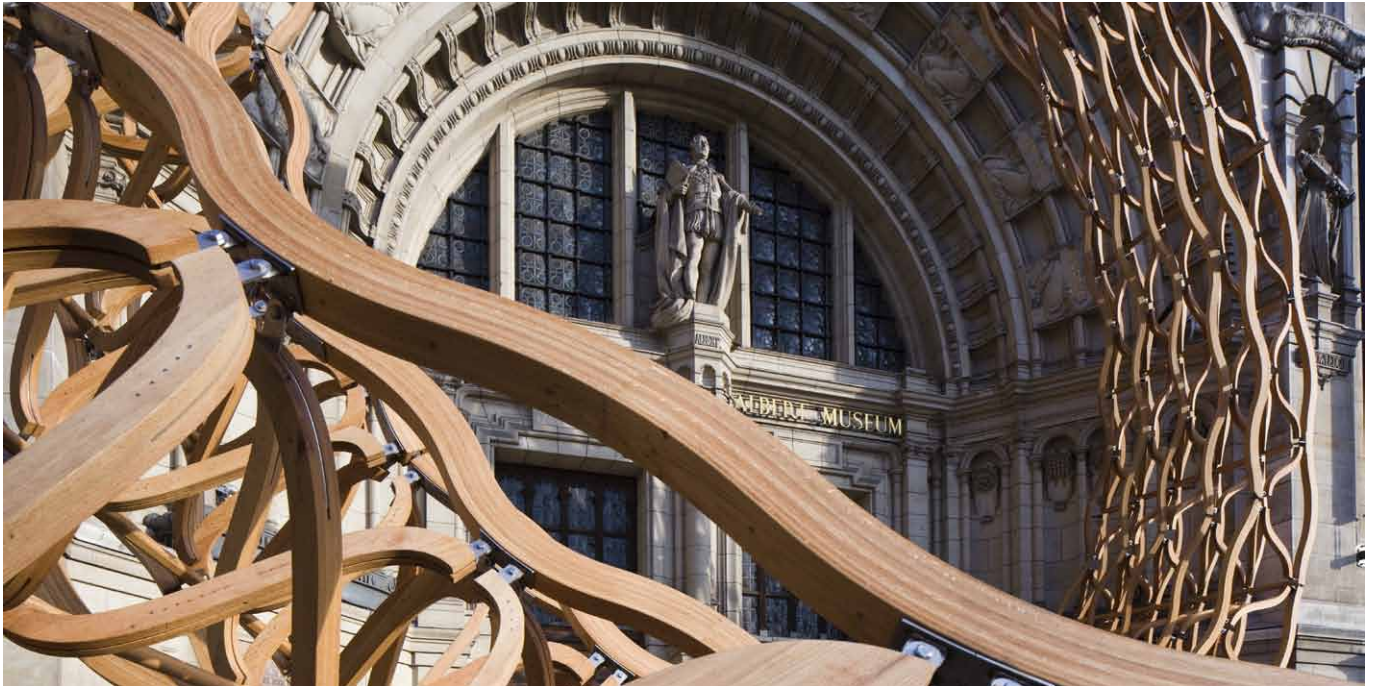
## **Paris**

The historic, worn stone façade is protected and enhanced by a sheer skin of pink glass sliding gracefully in front of it. The colour is intensified at the base, fading to clear, to create visual weight.

Client	Comme des Garçons
Location	New York, USA; Tokyo, Japan; Paris, France
Programme	Flagship stores
Area	100 m <sup>2</sup> each
Status	Completed
Commencement	1996
Completion	1998
Architect	Future Systems



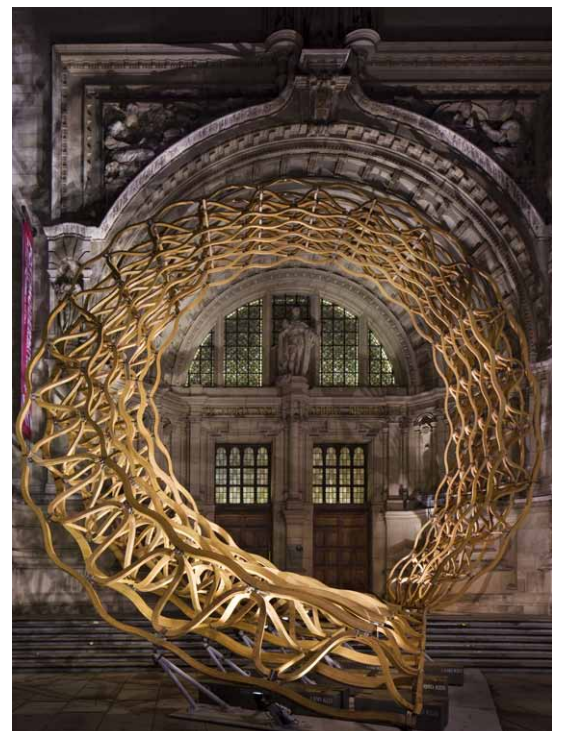
# TIMBERWAVE



**Timberwave is the product of its contextual response, yet with no physical interaction with the V&A. It coalesces the expression of material, structure and public engagement into a single beautiful piece. A seamless solution, it does not make distinctions between structure and aesthetic, structure and message, innovation and functionality, social and technological impact.**

Taller than a three-storey building, Timber Wave is made from specially curved pieces of American red oak donated by American Hardwood Export Council members, and fabricated by Cowley Timberwork in Lincolnshire. Its complex and challenging form is made possible through cutting-edge digital tools, 3D modelling and precision engineering. Specially designed lighting by SEAM Design and iGuzzini emphasise the intricate patterns and ensure that it is as exciting to view at night as during the day.

Client	London Design Festival & American Hardwood Export Council
Location	London, UK
Programme	Temporary entrance to the V&A Museum
Area	12m tall
Status	Completed
Commencement	2010
Completion	2011
Architect	AL_A



*Whenever you go see AL\_A you have to leave your shoes at the entrance along with at least 40 other pairs of shoes. AL\_A have enabled us to contemplate new possibilities for our future in the V&A, they have challenged our thinking and they continue to bring a freshness which we all relish. Their studio is a think tank, it has a very unusual atmosphere, a lot of brilliant young people and great ideas. AL\_A support our work but they challenge us too.*



**Martin Roth's Introduction to  
the V&A Museum Annual Design  
Lecture by Amanda Levete,  
February 2013**



AL\_A  
14A Brewery Road  
London  
N7 9NH

+44 (0) 20 7243 7670  
[www.ala.uk.com](http://www.ala.uk.com)